

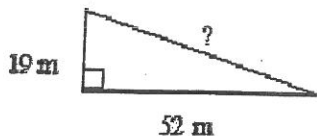
Worksheet: Pythagorean Theorem Problems

Show all your work. (Formula, what you plug in and final solution rounded to 2 decimal places.)

Multiple Choice

Identify the choice that best completes the statement or answers the question.

1. What is the measure of the missing length?

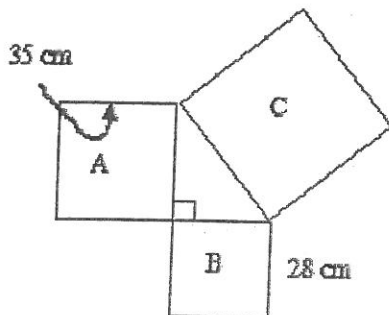


- a. 55 m
b. 57 m
c. 63 m
d. 71 m

2. Ms. Lange drove about 150 km east from La Sarre, to Senneterre, Quebec. She drove about another 75 km north to Lebel-sur-Quévillon. What is the approximate air distance from La Sarre to Lebel-sur-Quévillon, Quebec?

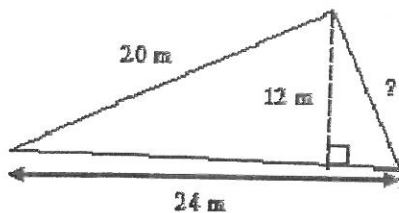
- a. 160 km
b. 168 km
c. 175 km
d. 225 km

3. What is the area of Square C?



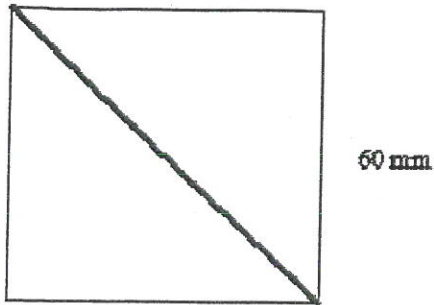
- a. 90 cm^2
b. 1960 cm^2
c. 2009 cm^2
d. 3969 cm^2

4. What is the measure of the missing length?



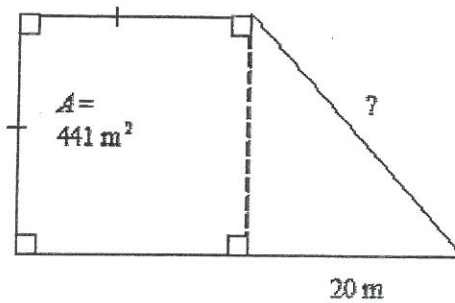
- a. 13 m
b. 14 m
c. 15 m
d. 16 m

5. What is the measure of the diagonal of the square to the nearest tenth of a millimetre?



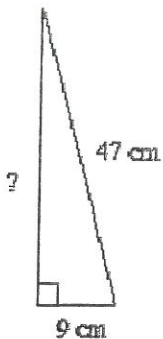
- a. 18.9 mm
- b. 60.0 mm
- c. 75.0 mm
- d. 84.9 mm

6. What is the measure of the hypotenuse?



- a. 13 m
- b. 20 m
- c. 20.5 m
- d. 29 m

7. What is the measure of the missing length to the nearest tenth of a centimetre?



- a. 20.6 cm
- b. 28.0 cm
- c. 46.1 cm
- d. 47.9 cm

8. A ship's guidance system measures that the ship is 380 m from the top of a lighthouse. The top of the lighthouse is 88 m above sea level. How far is the ship from the lighthouse to the nearest tenth of a metre?

- a. 182.9 m
- b. 234.0 m
- c. 369.7 m
- d. 390.1 m

9. What is the measure of the missing length?